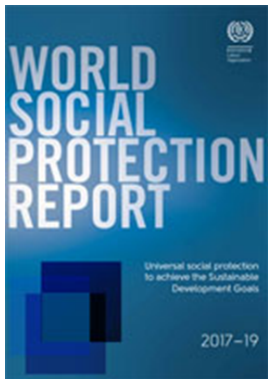


BUILDING SOCIAL PROTECTION FLOORS WITH THE ILO TOGETHER, TO CHANGE MILLIONS OF LIVES THROUGH INFORMATION MANAGEMENT AND SHARING



International
Labour
Organization

LEADING THE INTERNATIONAL EFFORT



The Social Protection Department of the ILO is leading international efforts to collect and document information on social protection. Every three years, it publishes the [World Social Protection Report](#), a flagship report on social protection systems in more than 190 countries and territories.

In 2017 it was found that 71 per cent of the world's population has no or only partial access to social protection systems, even though social protection is a human right and a sound economic investment.

Based on a life-cycle approach, the report provides an overview of national social protection systems, coverage, benefits and expenditures. It analyses recent policy trends, such as negative impacts of fiscal consolidation and adjustment measures and calls for the extension of social protection to reduce poverty and inequalities as well as to foster growth and development. The 2017-19 World Social Protection Report: Universal social protection to achieve the Sustainable Development Goals provides the essential information on the trends in social protection coverage of children, unemployed persons, older persons, persons with disabilities, pregnant women, newborns, work-injury victims and the poor and the vulnerable, as defined in SDG target 1.3.

The report is the main source of information worldwide for policy-makers, decision-makers and researchers working in the field of social protection. This flagship report serves as a reference for technical reports and policy papers on specific areas of social protection.

DEVELOPING DATABASES AND INFORMATIVE TOOLS

In parallel, the Social Protection Department plays a leading role in the development of a quantitative and qualitative database (World Social Protection Database) and statistical tools (Social Security Inquiry) to monitor social protection trends across the world.

The Social Security Inquiry (SSI) questionnaire has become the main comprehensive tool used to compile data on social protection coverage for children, unemployed persons, older persons, persons with disabilities, women with infants, work-injury victims, and the poor and the vulnerable.

In addition, indicators on adequacy of social protection benefits and revenues and expenditures of social protection schemes are produced based on the data provided in the questionnaire. SSI feeds the World Social Protection Database, which is an important source of information on social protection for each country in the world. Through this database, the ILO supports countries to monitor their own systems and build national statistical databases.

To enhance national capacities to generate comprehensive and reliable data, the Social Protection Department has been providing technical assistance and trainings to ILO constituent members, in collaboration with ILO field offices and other departments and UN agencies.

The latest methods, dataset and reports on social protection statistics, the results of impact assessments and applications of other tools are available on the [Social Protection Platform](#).

Qualitative databases track global trends. For example, one database monitors the functioning of social protection systems by tracking the contraction or expansion of financing, coverage, expenditures and other parameters. Other databases are organized by branch (e.g. health) or category of people (e.g. domestic workers). These databases support the global effort to improve social protection through information availability and capacity building.

A PLATFORM TO SHARE INFORMATION ON SOCIAL PROTECTION: www.social-protection.org

The ILO's Social Protection Platform is a comprehensive source of information on social protection to help countries achieve universal coverage. It provides information about the latest activities in countries, national policies, indicators and ILO's publications on social protection. The [workspace](#) that was created to monitor the indicators under the SDG target 1.3 provides a user-friendly and concise picture of the global, regional and country-specific trends in social protection effective coverage indicators throughout the lifecycle



FROM RIGHT TO REALITY WITH YOUR SUPPORT

The ILO has extensive experience in developing and sharing knowledge while simultaneously building capacities. This is crucial to answer to requests for technical assistance from countries and support the effective extension of social protection worldwide.

By investing in the World Social Protection Report and Database, you will contribute to producing and consolidating the indicators that will be used to measure the achievement of SDG targets 1.3, 3.8, 5.4, 8.5, and 10.4. With your help, knowledge on social protection will be regularly updated, enabling the global community to be more efficient in its analytical and technical tasks.

You can support us to:

- Update the World Social Protection Database by collecting statistical data at the country level.

US\$ 100,000 per year

- Build statistical capacities at the national level by supporting countries to collect and gather data using Social Security Inquiry tool.

US\$ 50,000 per country

- Publish the World Social Protection Report.

US\$ 100,000 for three years

- Produce technical research papers on specific areas.

US\$ 100,000 per year

- Develop and maintain the qualitative database on global social protection expansion and contraction trends.

US\$ 50,000 per year

- Develop a specific database on a social protection category or branch.

US\$ 50,000 per year

- Support South-South knowledge exchange.

US\$ 50,000 per year

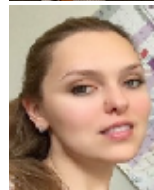
LISTENING TO YOUR AMBITIONS

As a donor, you receive regular reports on the progress made and have access to ongoing project activities and performance indicators.

To further discuss your objectives and the ways in which you can support information management and sharing, you can contact:




Fabio Duran Valverde, Head of Public Finance, Actuarial and Statistical Services
Social Protection Department, ILO Geneva
duranf@ilo.org



Valeria Nesterenko, Statistical Officer
Social Protection Department, ILO Geneva
nesterenko@ilo.org

VISIT OUR WEBSITE

 <http://iloglobalprogramme.social-protection.org>



AND FOLLOW US ON

 www.facebook.com/SPplatform

 www.twitter.com/soc_protection

 www.youtube.com/user/Ilotv

 www.linkedin.com/company/social-protection-platform