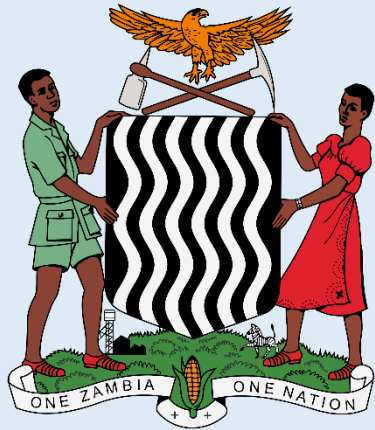


Mainstreaming Disability and Social Protection



Zambian Social Protection Week 2017
28 November 2017



United Nations
Z A M B I A

DELIVERING AS

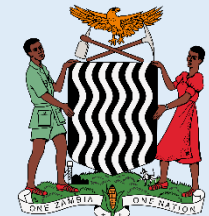


NE

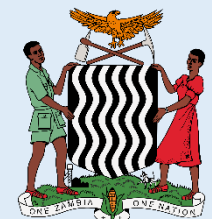
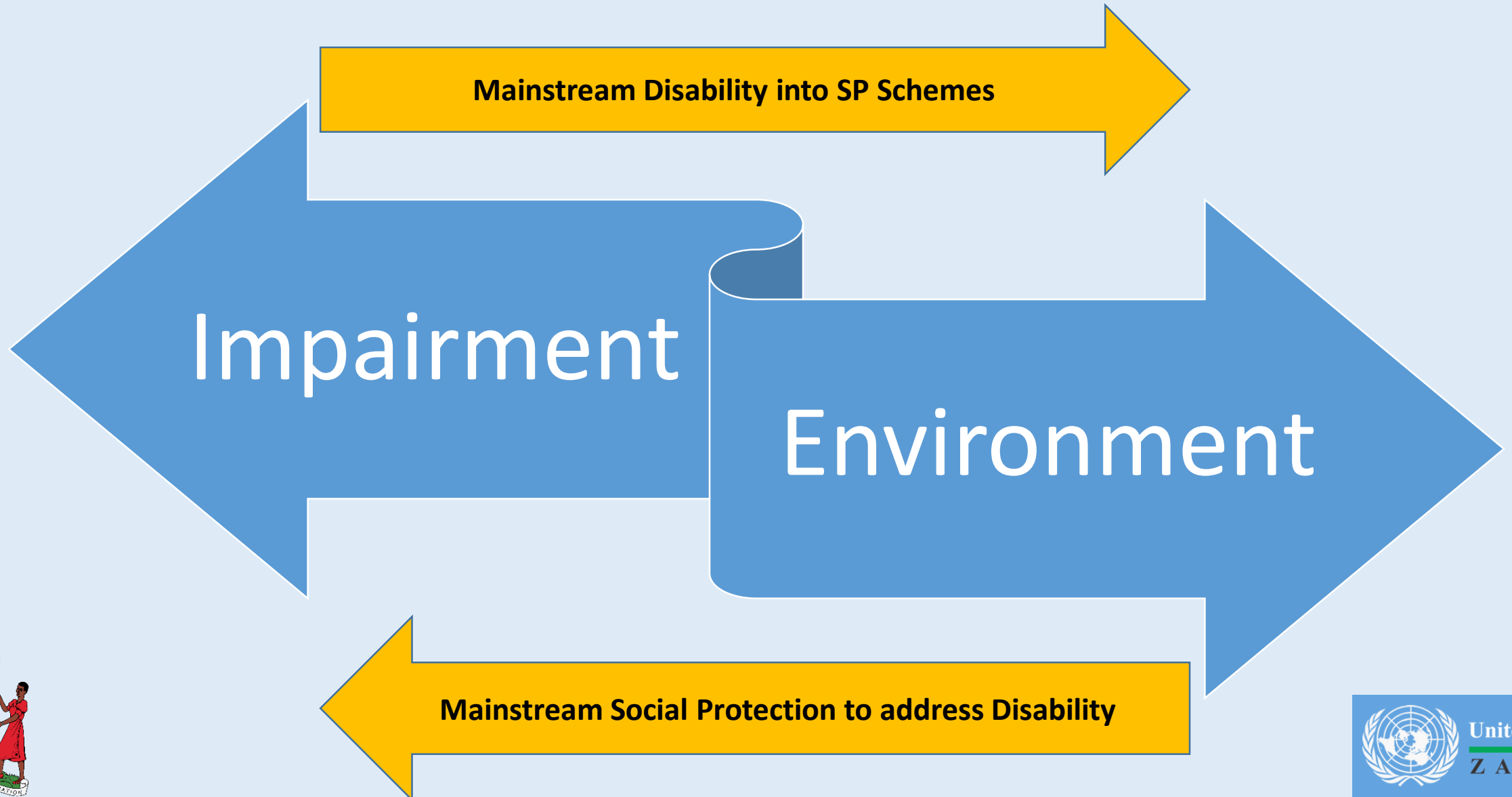
Social Model of Disability

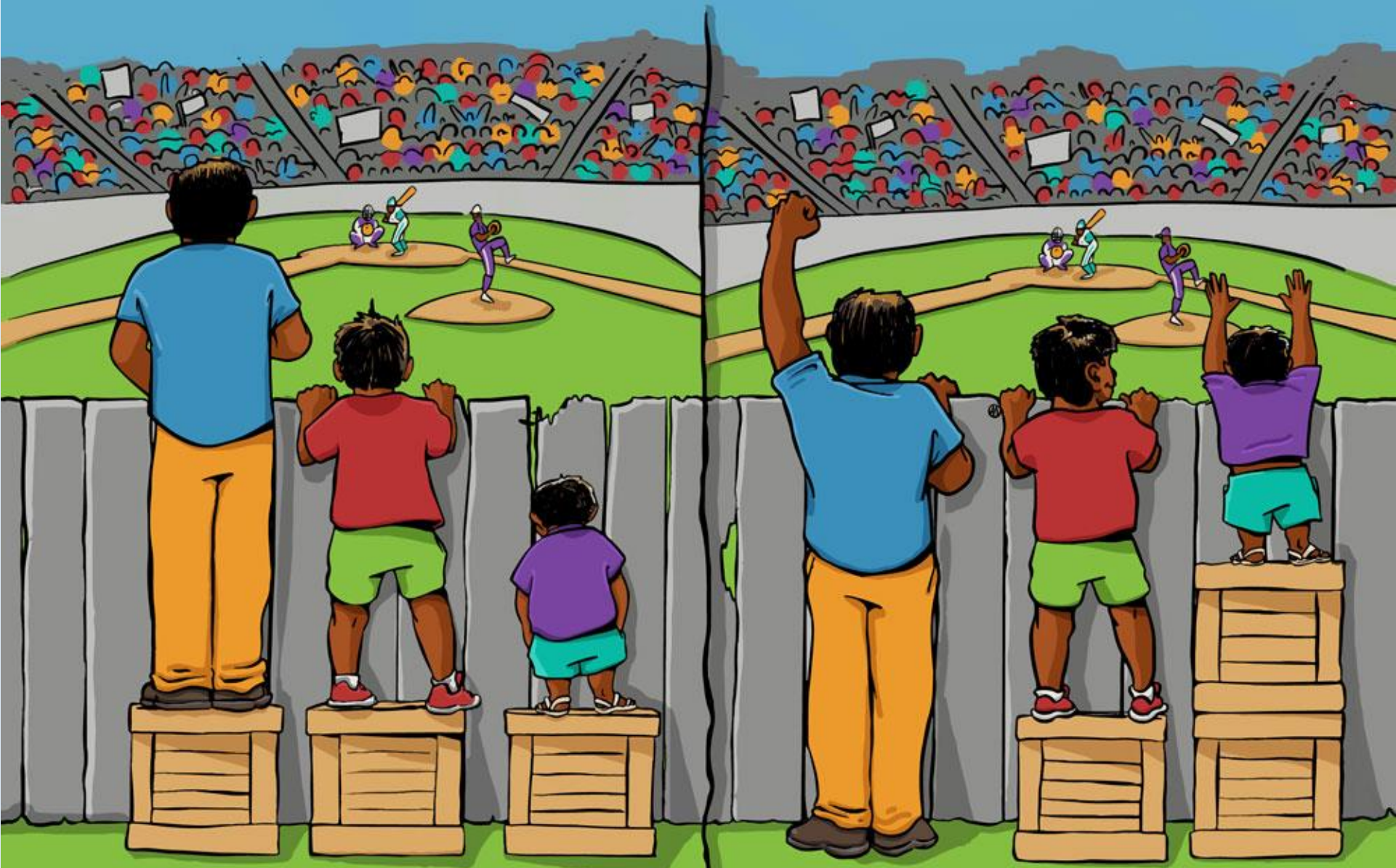
- United Nations Conventions on the Rights of Persons with Disabilities of 2006 was ratified in Zambia in 2008
- Shift from medical to social model of disability
- Definition Disability in Disability Act No 6 of 2012:
- *“disability” means a permanent physical, mental, intellectual or sensory impairment that alone, or in combination with social and environmental barriers, hinders the ability of a person to fully or effectively participate in society on an equal basis with others’*

Disability = Impairment + Environment!



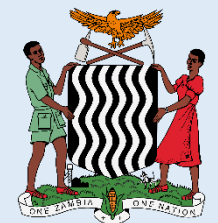
Mainstreaming Both Directions





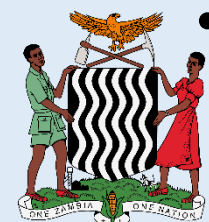
EQUALITY

EQUITY



Legal and Policy Framework in Zambia

- Persons with Disability Act
 - prescribes policy measures on optimal human potential, independent living - specifically equal access to services, devices and other assistance, public housing, retirement benefits and programmes (Art 36)
- National Policy on Disability
 - defines disability as deficiency (any restriction resulting from..)
 - safeguard and promote adequate standard of living and social protection, ensuring access to services, protection, expenses, retirement, public housing, health insurance
- National Social Protection Policy
 - Social Assistance, Social Insurance, Livelihoods and Empowerment, Protection, Disability
 - Safeguard and promote adequate standard of living, ensure equitable access to opportunities (services, devices, poverty reduction programmes, gender, training, access to finance, participation in governance)
- Act and Disability Policy, almost verbatim with UNCRPD



Mainstreaming Disability in Social Protection

Objective: No barriers, Effective Access, Full inclusion. **Duty to reach**

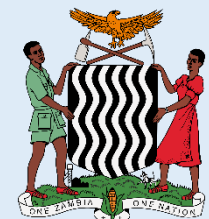
- Public Welfare Assistance Scheme – one-off grants, 9.8% (2014) persons with disabilities
- SCT includes/targets persons with severe disability (around 14%)
- Food Security Pack - disability one eligibility criterion, no disaggregated data
- Women's development programmes (WEF, VB, SWL) – inclusive, no disaggregated data
- Farmers Input Support Programme (FISP) – no disability targeting, no data
- If paying income tax, tax discount of up to 300 ZMW/month



Mainstreaming Social Protection in Disability Inclusion

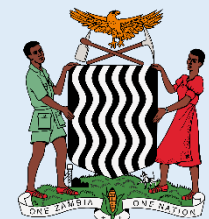
Objective: Transforming Disability by Changing the Environment

- Workman's Compensation Fund: Social Insurance scheme to cover employment injuries, invalidities and death
- Social Cash Transfer Scheme: One targeting criterion is certified severe disability. Households thus identified receive double grant per month (ZMW 180 instead of ZMW 90)
- National Trust Fund for Persons with Disability: Microfinance loans scheme for persons with disabilities
- National Vocational Rehabilitation Centre: Specialised vocational training for persons with disabilities
- Assistive Devices – no special fund established but stipulated in Act



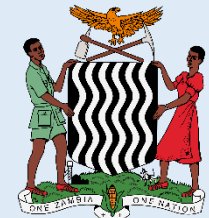
Opportunities identified in 2015 ILO-GRZ study

- Disability Management Information System
- More data disaggregation, mainstream disability into M&E and research
- Strengthen Rehabilitation and Return to Work nexus
- Clarify where disability is mainstreamed and where programme is disability targeted, e.g. Microfinance
- Improve overall Disability Mainstreaming and strengthen ZAPD capacity to perform monitoring mandate under the Disability Act



Upcoming Joint Programme in Luapula

- The UN Zambia have won a bid for a PRPD (UN Partnership on the Rights of Persons with Disabilities) project to run 2018-2019/2020
- Objective is to pilot a fully disability mainstreamed service delivery framework
- Social Protection a key strategy
- *“The project focuses on promoting disability inclusion in HIV, sexual and reproductive health services and linkages to social protection in in Mansa and Samfya Districts in Luapula Province, with a particular focus on women and girls with disabilities.”*



THANK YOU

Daniel Kunitz, dkunitz@unicef.org

Sam Muradzikwa, smuradzikwa@unicef.org

Luca Pellerano, pellerano@ilo.org

