



MINISTRY OF FAMILY, LABOUR
AND SOCIAL PROTECTION

Institutional set-up in Mongolia

UNDRAM BATBOLD

Ministry of Family, Labour and Social Protection

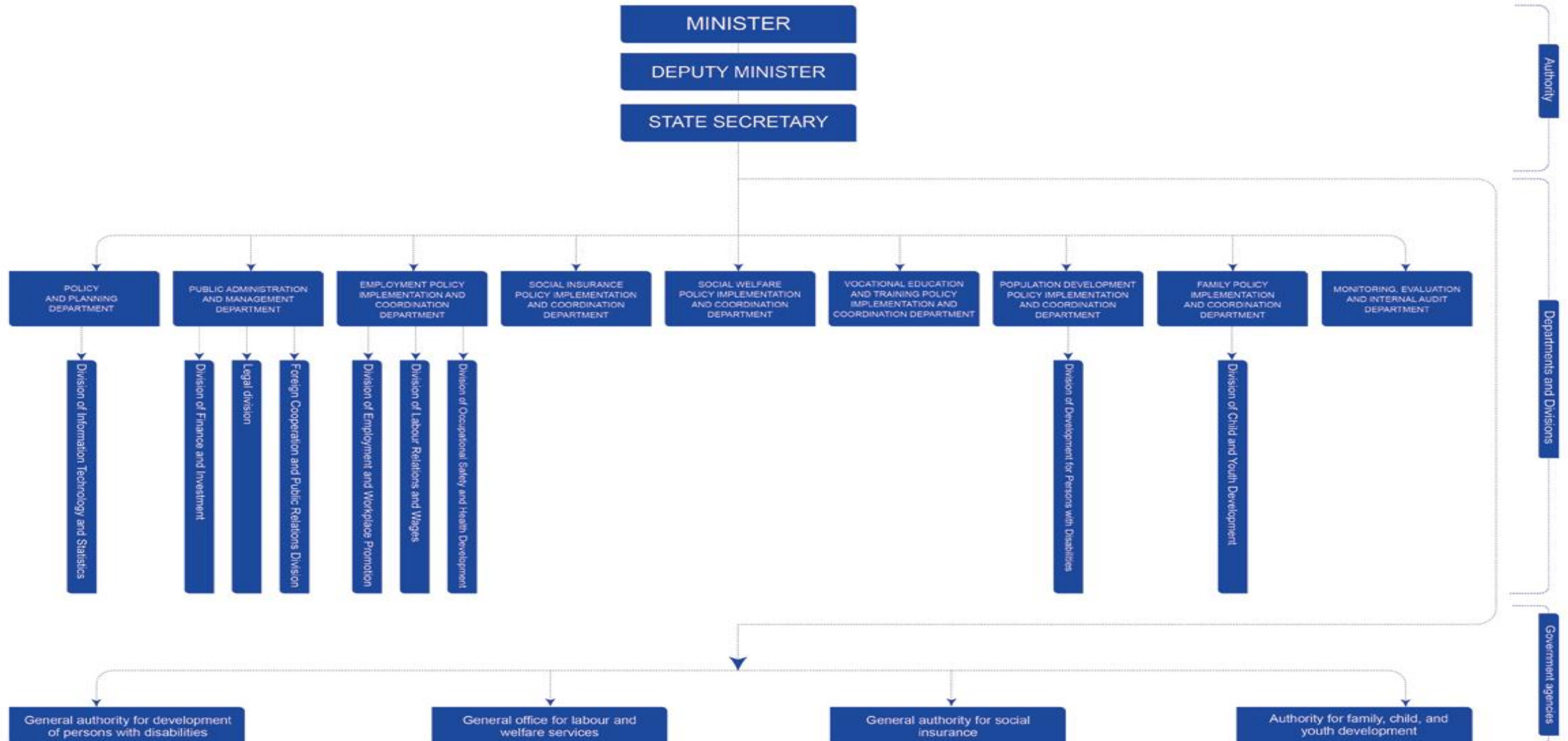
MONGOLIA

2024 October



GOVERNMENT OF MONGOLIA

MINISTRY OF FAMILY, LABOUR
AND SOCIAL PROTECTION



“FROM WELFARE TO EMPLOYMENT”

Employee	Part-time	Seasonal	Day labourer	Public Civil servant	SOE	Police	Military	Migrant (incoming)	Migrant (outgoing)	Domestic workers	Employer	Self-employed
M	M	M	M	M	M	N	N	M	N	M	M	N

M = Mandatory coverage; N = Not allowed to participate

Benefit		Insurable earnings for contribution	
Minimum	Maximum	Minimum	Maximum
50% to 70% of minimum wage	50% to 70% of 10 times the minimum wage	Minimum wage	10 times the minimum wage

Minimum wage is 3,929 Mongolian tugrik per hour in 2024

POVERTY ELIMINATION AND WELFARE TO EMPLOYMENT POLICY

Long-term transition services to sustainable livelihoods



This service covers extremely poor, food insecure, malnourished and households living below the poverty line.

Long-term services of up to 36 months to improve livelihoods, **ELIMINATE POVERTY, AND TRANSFER FROM WELFARE TO EMPLOYMENT** will be implemented in cooperation with civil society organizations.
/Developed a program implementation manual.

ХӨДӨЛМӨР ЭРХЛЭЛТИЙГ ДЭМЖИХ ХӨТӨЛБӨР, АРГА ХЭМЖЭЭ

As of November 2023

Implementation
66%



34.0 THOUSAND JOBS HAVE
BEEN CREATED

Constantly 6.1 K	Temporary 21.3 K	Of the hour 6.6 K
---------------------	---------------------	----------------------

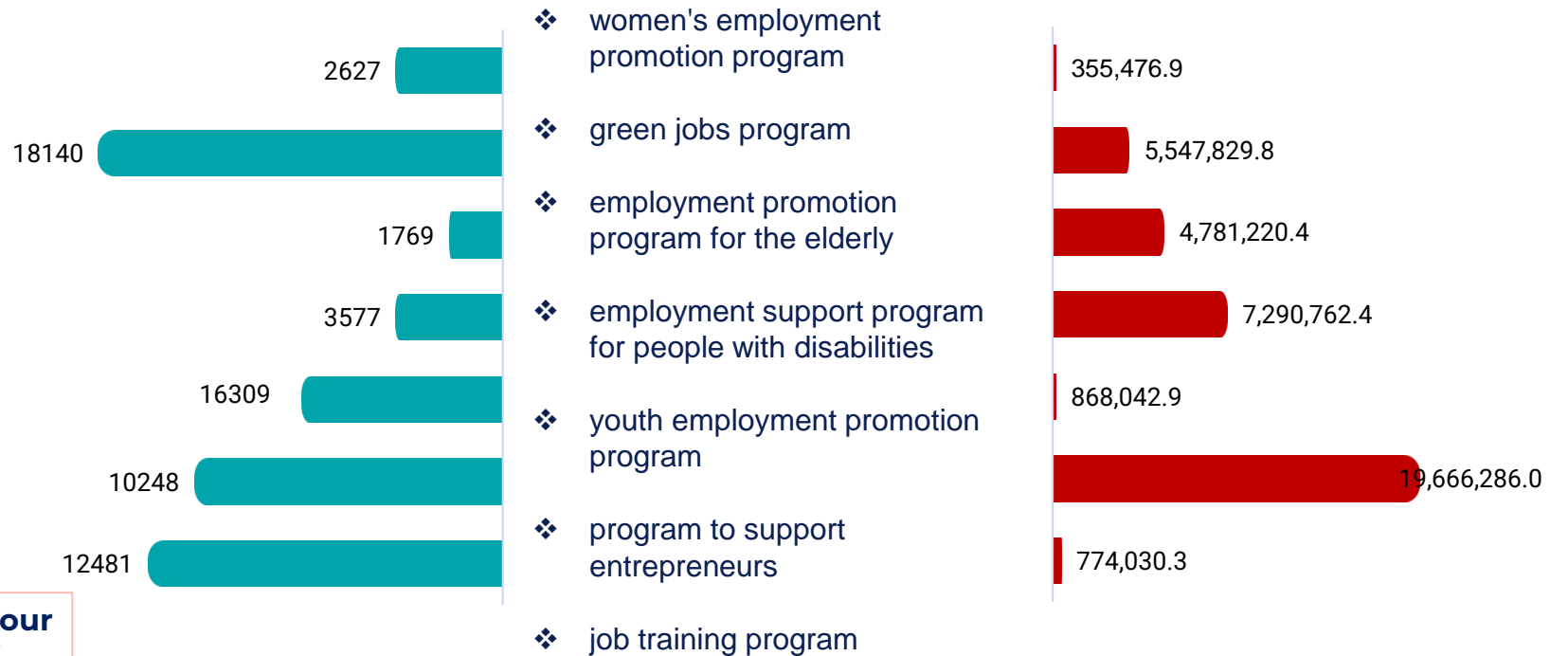


65.2 thousand
Citizens covered

The approved budget is 59.7
billion MNT



39.3 BILLION MNT
Expenditure



6
direction

Recruitment

Санхүүгийн
дэмжлэг

Financial support

Startup business

Public works

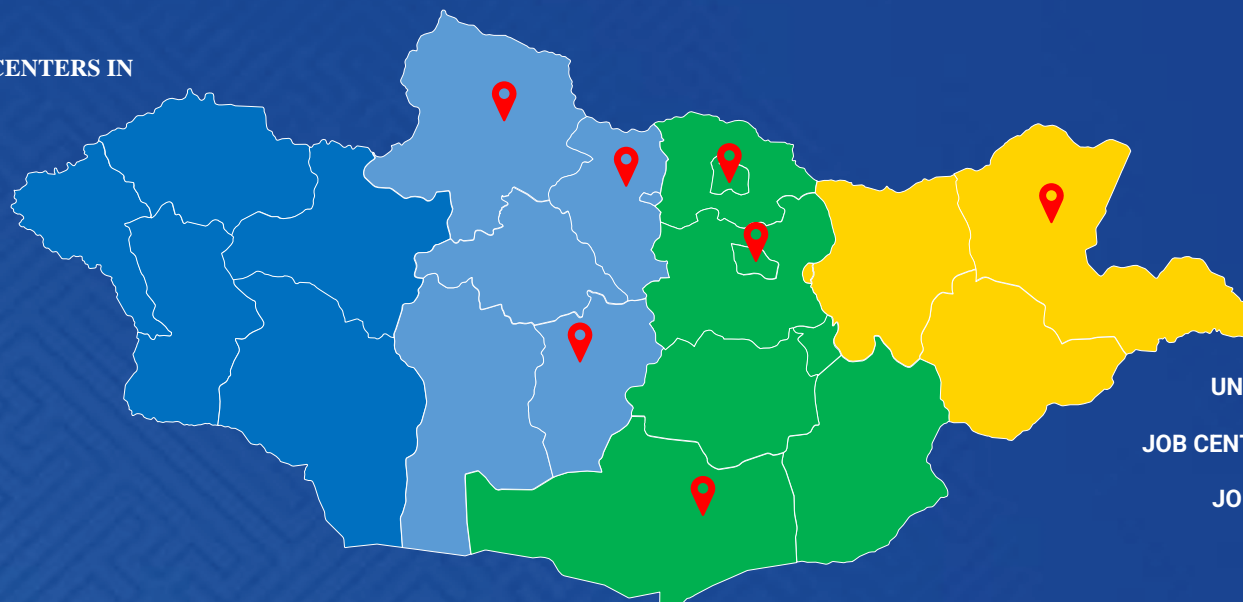
Other measures



MINISTRY OF FAMILY,
LABOUR AND SOCIAL
PROTECTION

JOB CENTER MONGOLIA

THERE ARE A TOTAL OF 19 CENTERS IN
THE SIZE



JOB CENTER MONGOLIA CONTROL CENTER 1

UNITED SERVICE CENTER UNITED SERVICE CENTER 4

JOB CENTER MONGOLIA INDEPENDENT SERVICE CENTER 12

JOB CENTER MONGOLIA CAPITAL SERVICE CENTER 2

ORGANIZING ACCESSIBLE AND QUALITY COMPREHENSIVE EMPLOYMENT
SERVICES THROUGH PUBLIC AND PRIVATE PARTNERSHIP

EMPLOYMENT SKILLS
DEVELOPMENT SUPPORT

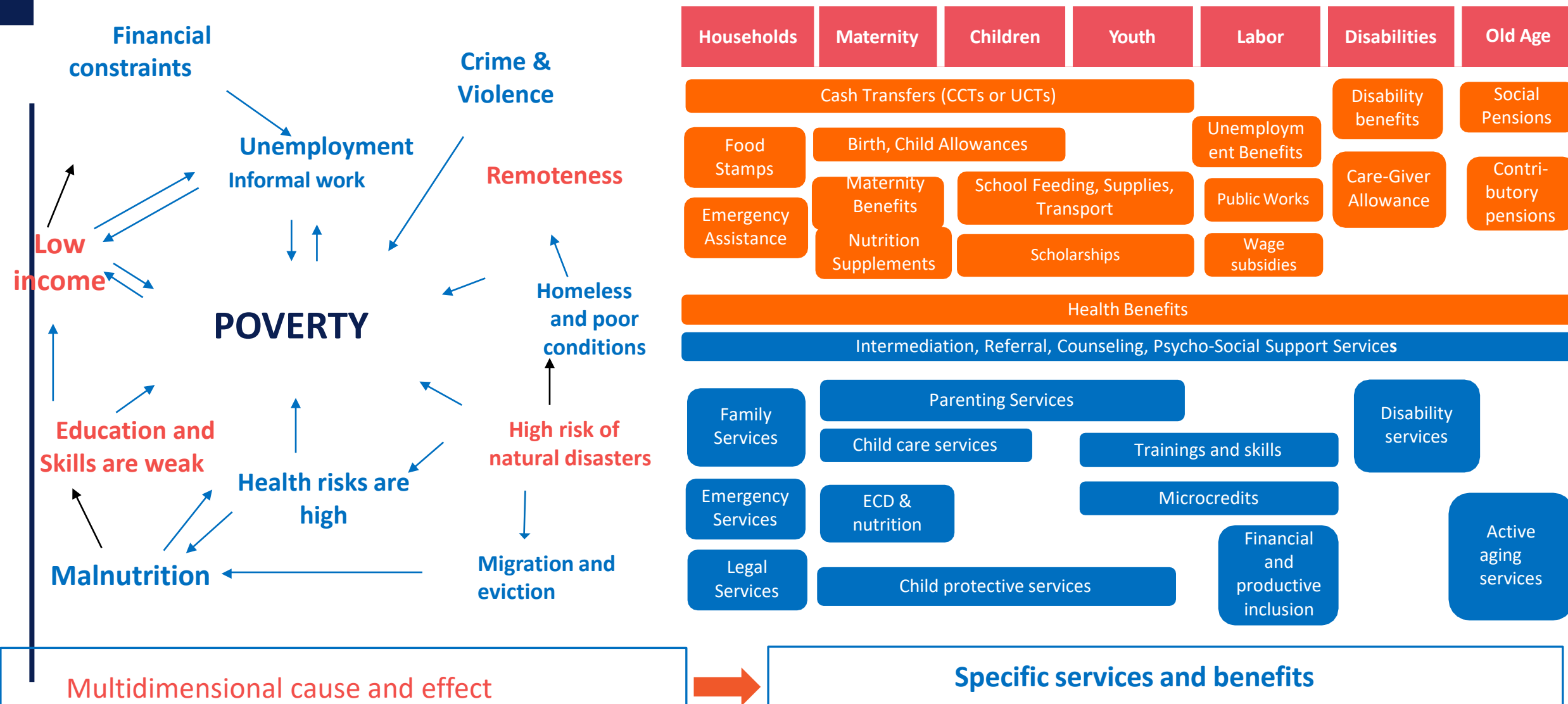
SUPPORT FOR
EMPLOYERS AND
EMPLOYERS

CIVIL SUPPORT OF
TARGET GROUPS

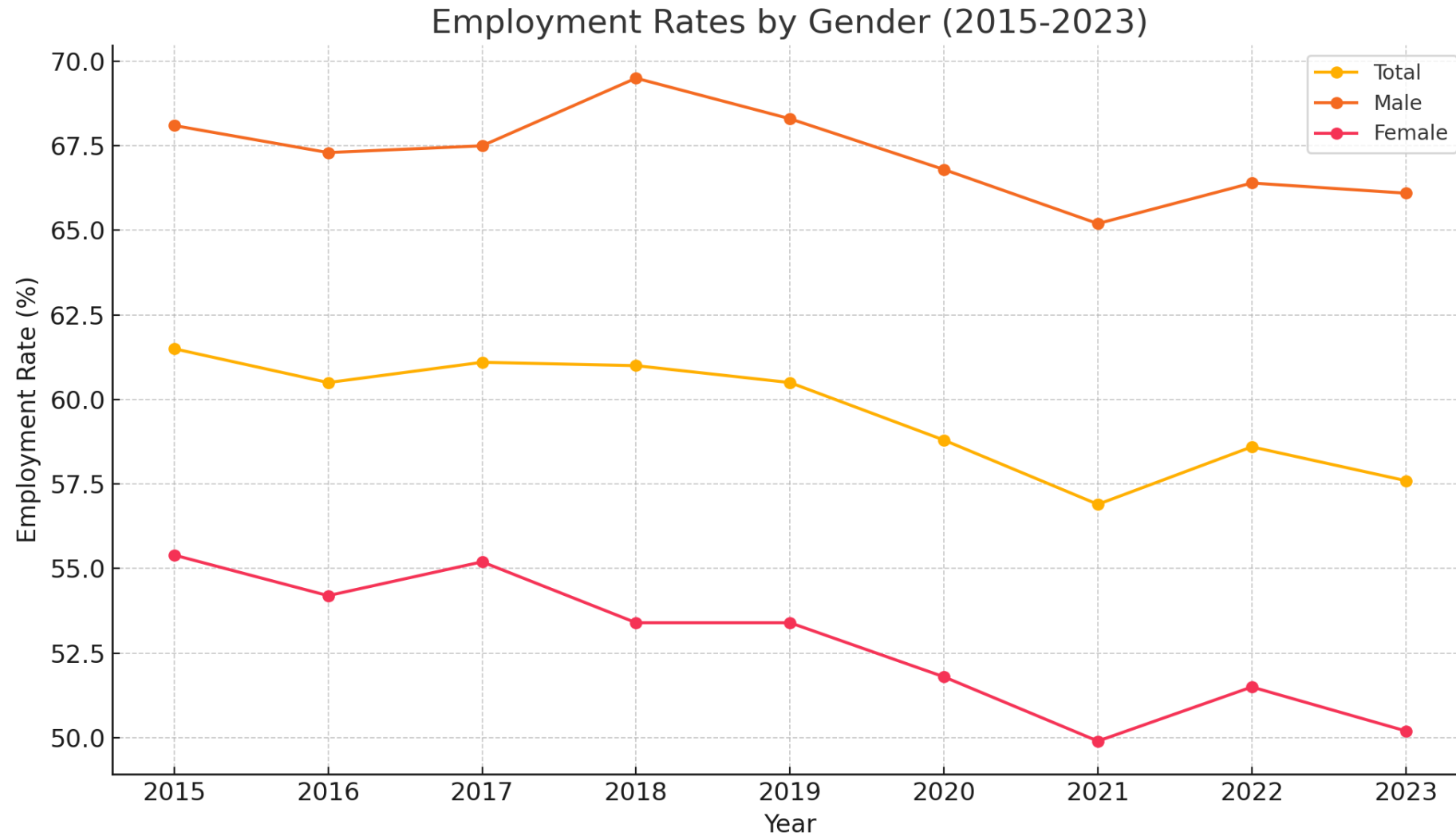
OTHER ACTIVITIES

PARTNERSHIPS AND
LOCAL COLLABORATION

REDUCING POVERTY AND VULNERABILITY



Employment rate



MAKE EMPLOYMENT SERVICES CUSTOMER-CENTRIC AND COMPLETELY ELECTRICAL



It is becoming a large-scale comprehensive platform that can be used by 1.0 MILLION users at the same time



GET IT ON
Google Play



Download on the
App Store



110 SERVICES OUT OF A TOTAL OF 160 SERVICES IN THE INDUSTRY ARE TRANSFERRED TO ELECTRONIC





MINISTRY OF FAMILY, LABOUR
AND SOCIAL PROTECTION

**THANK YOU FOR YOUR
ATTENTION**