

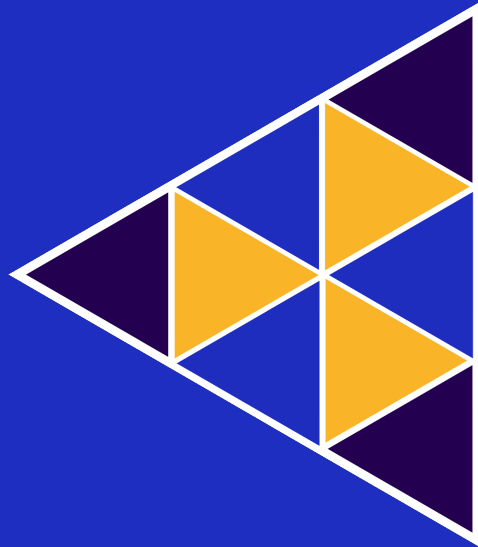


International
Labour
Organization



ILO/QPSS

Quantitative Platform
on Social Security



ILO/RAP

Rapid Assessment Protocol
Social Protection Costing Tool

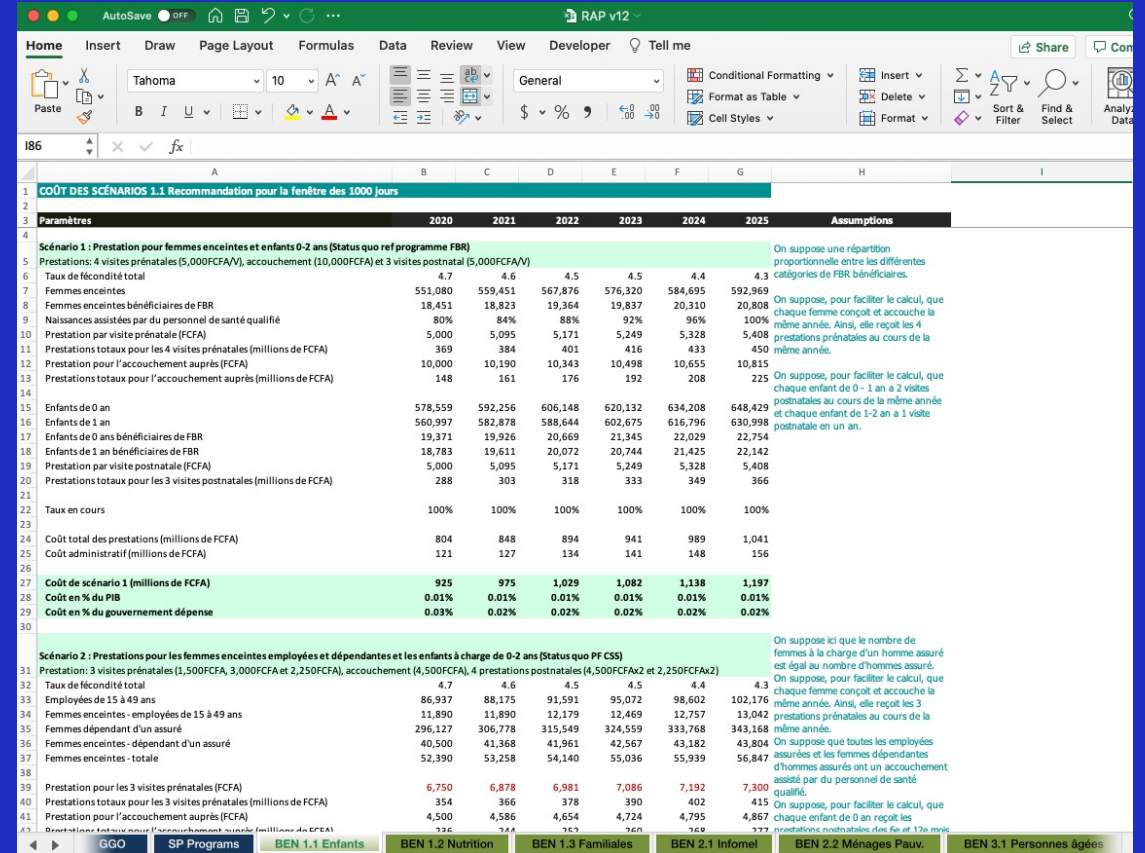
Public Finance, Actuarial and Statistical Services Unit (PFACTS)



Background

ILO/RAP is a costing tool for social protection floors that combines SP benefits and population groups in order to model different schemes under a SP system

- RAP was developed as part of the ABND process
- Excel-based
- National interpretation of calculations and results
- Created the structure for the ILO/RAP



Paramètres	2020	2021	2022	2023	2024	2025	Assumptions
Scénario 1 : Prestation pour femmes enceintes et enfants 0-2 ans (Status quo ref programme FBR)							
5 Prestations: 4 visites prénatales (5,000FCFA), accouchement (10,000FCFA) et 3 visites postnatal (5,000FCFA)							On suppose une répartition proportionnelle entre les différentes catégories de FBR bénéficiaires.
6 Taux de fécondité total	4.7	4.6	4.5	4.5	4.4	4.3	
7 Femmes enceintes	551,080	559,451	567,876	576,320	584,695	592,969	
8 Femmes enceintes bénéficiaires de FBR	18,451	18,823	19,364	19,837	20,310	20,808	On suppose, pour faciliter le calcul, que chaque femme conçoit et accouche la même année. Ainsi, elle reçoit les 4 prestations prénatales au cours de la 450 même année.
9 Naissances assistées par du personnel de santé qualifié	80%	84%	88%	92%	96%	100%	
10 Prestation par visite prénatale (FCFA)	5,000	5,095	5,171	5,249	5,328	5,408	
11 Prestations totaux pour les 4 visites prénatales (millions de FCFA)	369	384	401	416	433	450	
12 Prestation pour l'accouchement auprès (FCFA)	10,000	10,190	10,343	10,498	10,655	10,815	
13 Prestations totaux pour l'accouchement auprès (millions de FCFA)	148	161	176	192	208	225	On suppose, pour faciliter le calcul, que chaque enfant de 0 - 1 an a 2 visites postnatales au cours de la même année et chaque enfant de 1-2 an a 1 visite postnatale en un an.
14							
15 Enfants de 0 an	578,559	592,256	606,148	620,132	634,208	648,429	
16 Enfants de 1 an	560,997	582,878	588,644	602,675	616,796	630,998	
17 Enfants de 0 ans bénéficiaires de FBR	19,371	19,926	20,669	21,345	22,029	22,754	
18 Enfants de 1 an bénéficiaires de FBR	18,783	19,611	20,072	20,744	21,425	22,142	
19 Prestation par visite postnatale (FCFA)	5,000	5,095	5,171	5,249	5,328	5,408	
20 Prestations totaux pour les 3 visites postnatales (millions de FCFA)	288	303	318	333	349	366	
21							
22 Taux en cours	100%	100%	100%	100%	100%	100%	
23							
24 Coût total des prestations (millions de FCFA)	804	848	894	941	989	1,041	
25 Coût administratif (millions de FCFA)	121	127	134	141	148	156	
26							
27 Coût de scénario 1 (millions de FCFA)	925	975	1,029	1,082	1,138	1,197	
28 Coût en % du PIB	0.01%	0.01%	0.01%	0.01%	0.01%	0.01%	
29 Coût en % du gouvernement dépense	0.03%	0.02%	0.02%	0.02%	0.02%	0.02%	
30							
Scénario 2 : Prestations pour les femmes enceintes employées et dépendantes et les enfants à charge de 0-2 ans (Status quo PF CSS)							
31 Prestation: 3 visites prénatales (1,500FCFA, 3,000FCFA et 2,250FCFA), accouchement (4,500FCFA), 4 prestations postnatales (4,500FCFAx2 et 2,250FCFAx2)							On suppose ici que le nombre de femmes à la charge d'un homme assuré est égal au nombre d'hommes assurés. On suppose, pour faciliter le calcul, que chaque femme conçoit et accouche la même année. Ainsi, elle reçoit les 3 prestations prénatales au cours de la même année.
32 Taux de fécondité total	4.7	4.6	4.5	4.5	4.4	4.3	
33 Employées de 15 à 49 ans	86,937	88,175	91,591	95,072	98,602	102,176	
34 Femmes enceintes - employées de 15 à 49 ans	11,890	11,890	12,179	12,469	12,757	13,042	On suppose que toutes les employées assurées et les femmes dépendantes d'hommes assurés ont un accouchement assisté par du personnel de santé qualifié.
35 Femmes dépendant d'un assuré	296,127	306,778	315,549	324,559	333,768	343,168	On suppose, pour faciliter le calcul, que chaque enfant de 0 an reçoit les prestations postnatales: des 6e et 12e mois.
36 Femmes enceintes - dépendant d'un assuré	40,500	41,368	41,961	42,567	43,182	43,804	
37 Femmes enceintes - totale	52,390	53,258	54,140	55,036	55,939	56,847	
38							
39 Prestation pour les 3 visites prénatales (FCFA)	6,750	6,878	6,981	7,086	7,192	7,300	
40 Prestations totaux pour les 3 visites prénatales (millions de FCFA)	354	366	378	390	402	415	
41 Prestation pour l'accouchement auprès (FCFA)	4,500	4,586	4,654	4,724	4,795	4,867	
42 Prestations totaux pour l'accouchement auprès (millions de FCFA)	126	134	141	148	156	164	
43							



International
Labour
Organization

Background



ILO/RAP builds upon the RAP model to introduce a modern and sophisticated new online tool with constant improvements

- Maintains the simplicity of the previous tool but bases it on a consistent protocol that facilitates work
- Requires no previous knowledge of the tool or advanced quantitative/Excel skills to use
- Part of the Quantitative Platform on Social Security

The screenshot shows the 'Applications Portal' for the ILO Quantitative Platform on Social Security. At the top, there are logos for the International Labour Organization and ILO/QPSS. Below the logos, a welcome message reads: 'Welcome to the ILO Quantitative Platform on Social Security!' followed by the instruction 'To enter, click on the icon for each tool:'. Four tool icons are displayed in a 2x2 grid:

- ILO/PENSIONS**: Actuarial Pension Model (Icon with red and blue triangles)
- ILO/SSI**: Social Security Inquiry (Icon with blue and green triangles)
- ILO/HEALTH**: Actuarial Health Model (Icon with green and blue triangles)
- ILO/RAP**: Rapid Assessment Protocol Social Protection Costing Tool (Icon with yellow and blue triangles)



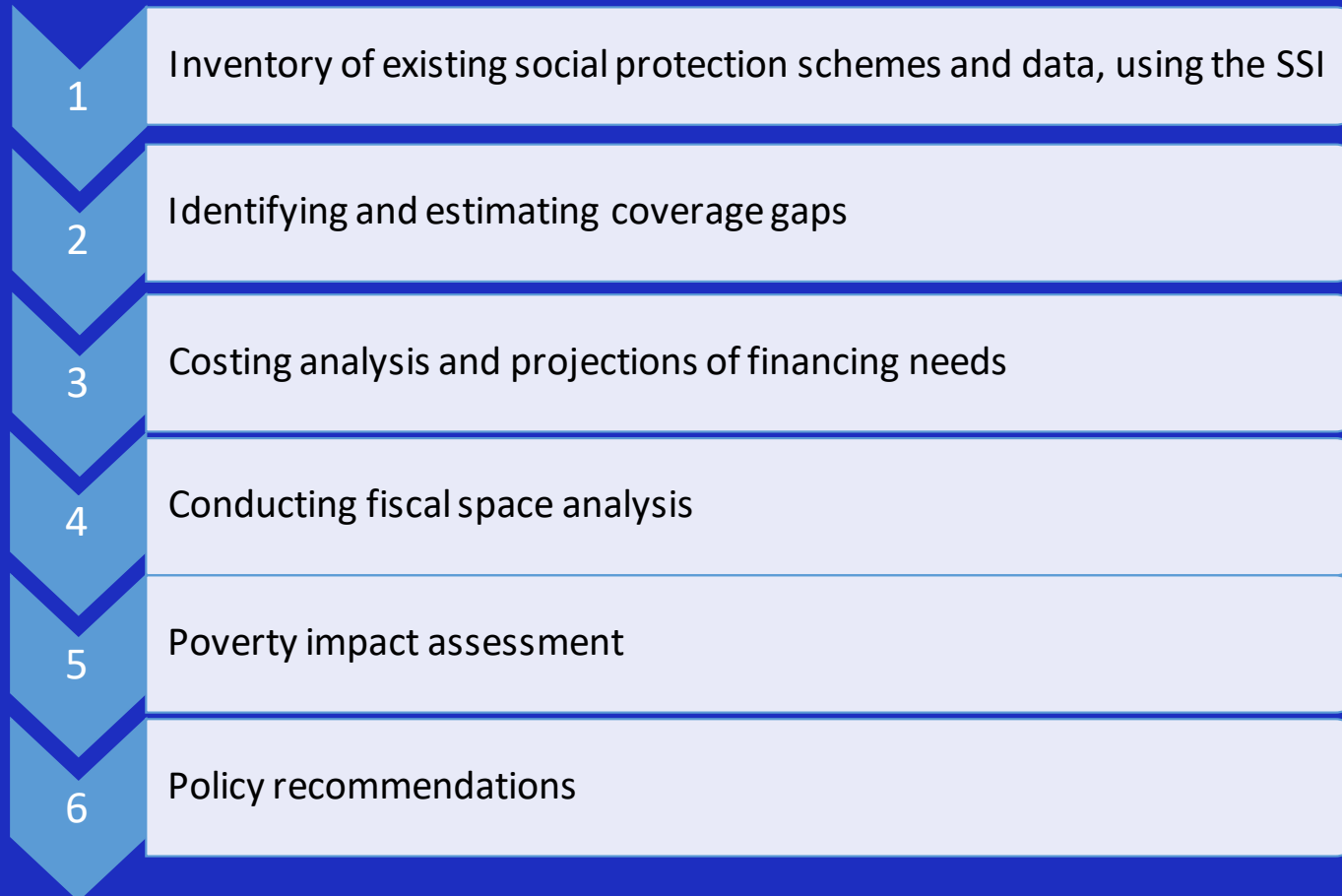
International
Labour
Organization

ILO/RAP in the Context of the ABND



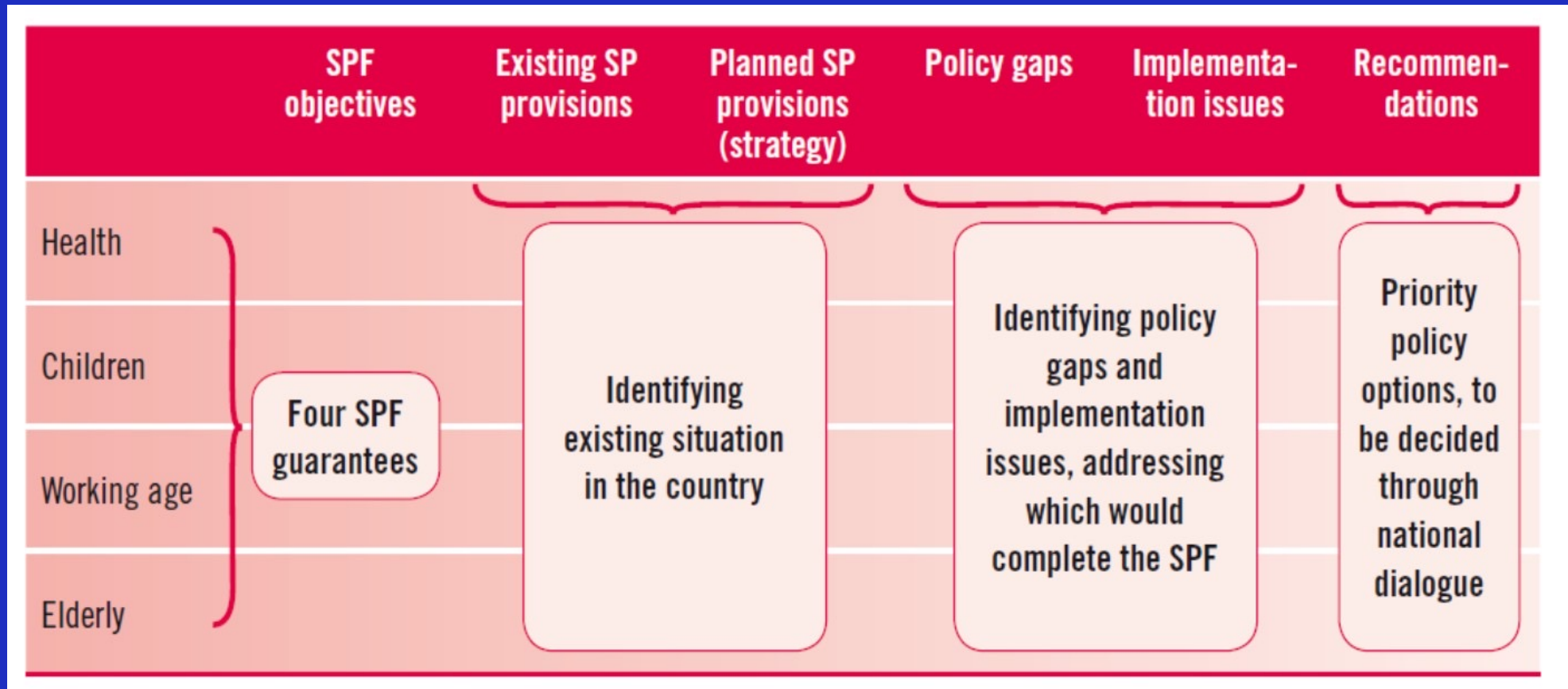
ILO/QPSS

Quantitative Platform
on Social Security





Assessment Matrix





Features



- Formalized and consistent protocol of work
- Systematic centralized data repository to facilitate comparative analysis
- User-friendly inputs and results overview in a dynamic tool
- Completely online for work in teams
- Technical improvements and backend support

The screenshot displays the ILO/RAP web interface. The top navigation bar includes the ILO logo, the text 'International Labour Organization', the ILO/RAP logo, and the text 'Rapid Assessment Protocol Social Protection Costing Tool'. The main content area shows a sidebar with a tree view of models, with '002 - Demographic and Financial Projection By Benefit' selected. The main panel displays a table titled '002 - Demographic and Financial Projection By Benefit (individuals) [rpt002_dempri_bi]'. The table includes an 'Export' button and a search bar. The table data is as follows:

		Demographic and Financial Projection By Benefit					
		2020	2021	2022	2023	2024	2025
1	Demographic and Financial Projection By Benefit						
2	[Ex.1] Example 29.09.2021 (Model: Ex-1)						
3	Country:	Somewhere					
4	Benefit:	Prenatal and infant benefit					
5	In cash or kind:	Cash					
6	Number of Transfers per Year:	8					
7		Base Year		Projection Period			
8		2020	2021	2022	2023	2024	2025
9	Total Population	16,705,608.00	17,215,433.00	17,738,795.00	18,275,743.00	18,826,340.00	19,390,727.00
10	Men	8,314,250.00	8,566,367.00	8,825,227.00	9,090,857.00	9,363,286.00	9,642,606.00
11	Women	8,391,358.00	8,649,066.00	8,913,568.00	9,184,886.00	9,463,054.00	9,748,121.00
12	Labor Force	5,482,452.20	5,655,230.20	5,832,939.30	6,015,536.05	6,197,786.20	6,393,818.05
13	Men	2,730,261.25	2,810,649.35	2,898,970.75	2,989,721.45	3,080,299.80	3,177,727.65
14	Women	2,752,190.95	2,844,580.85	2,933,968.55	3,025,814.60	3,117,486.40	3,216,090.40
15	Objective Population (OP)	1,680,302.15	2,022,430.41	2,059,443.21	2,103,935.75	2,176,430.97	2,207,960.74
16	Men	574,873.00	887,200.00	907,947.00	928,873.00	949,934.00	971,173.00
17	Women	1,105,429.15	1,135,230.41	1,151,496.21	1,175,062.75	1,226,496.97	1,236,787.74



Use Case Examples



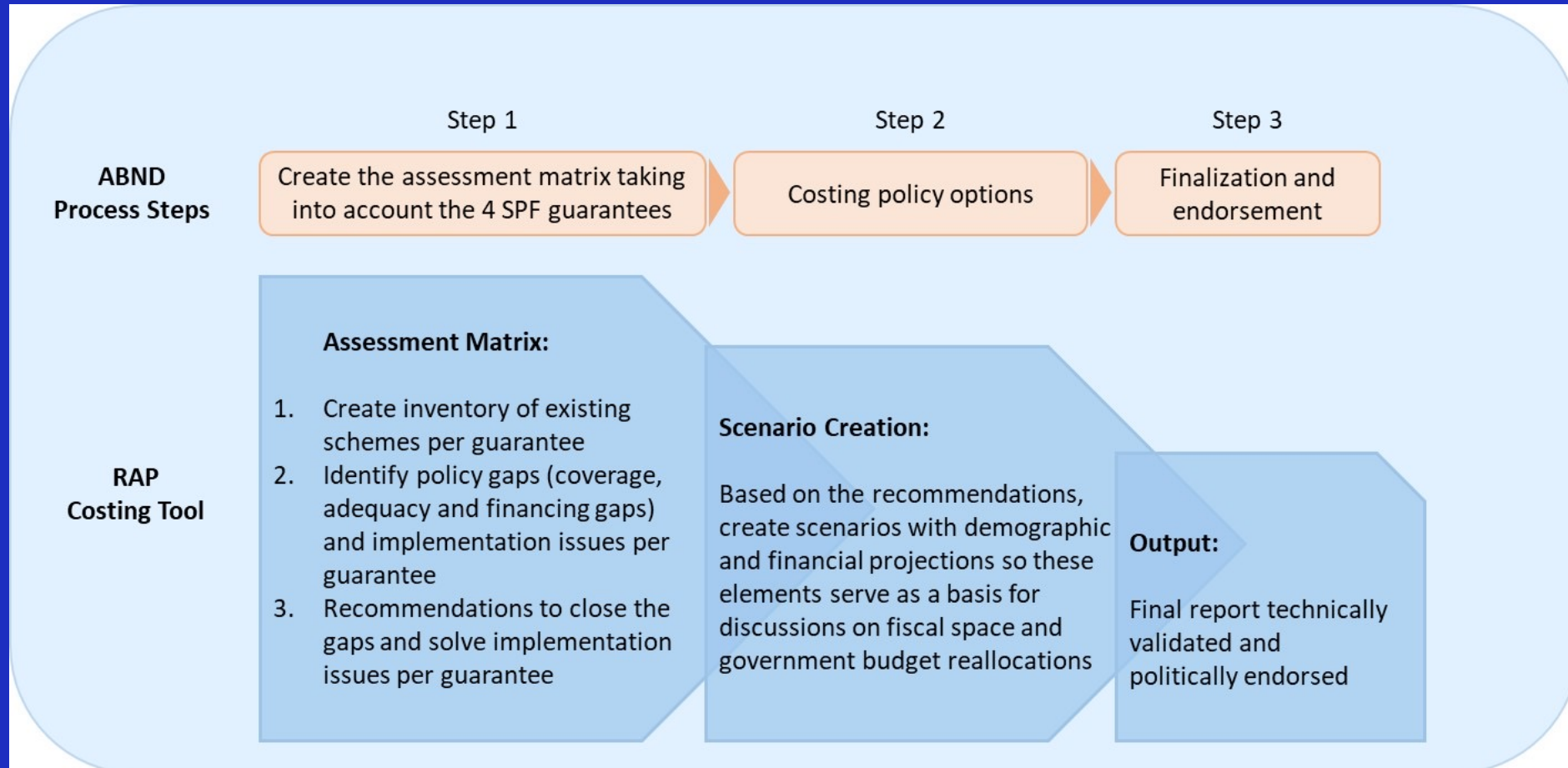
ILO/RAP supports quick, evidence-based decision-making on financing of SP schemes

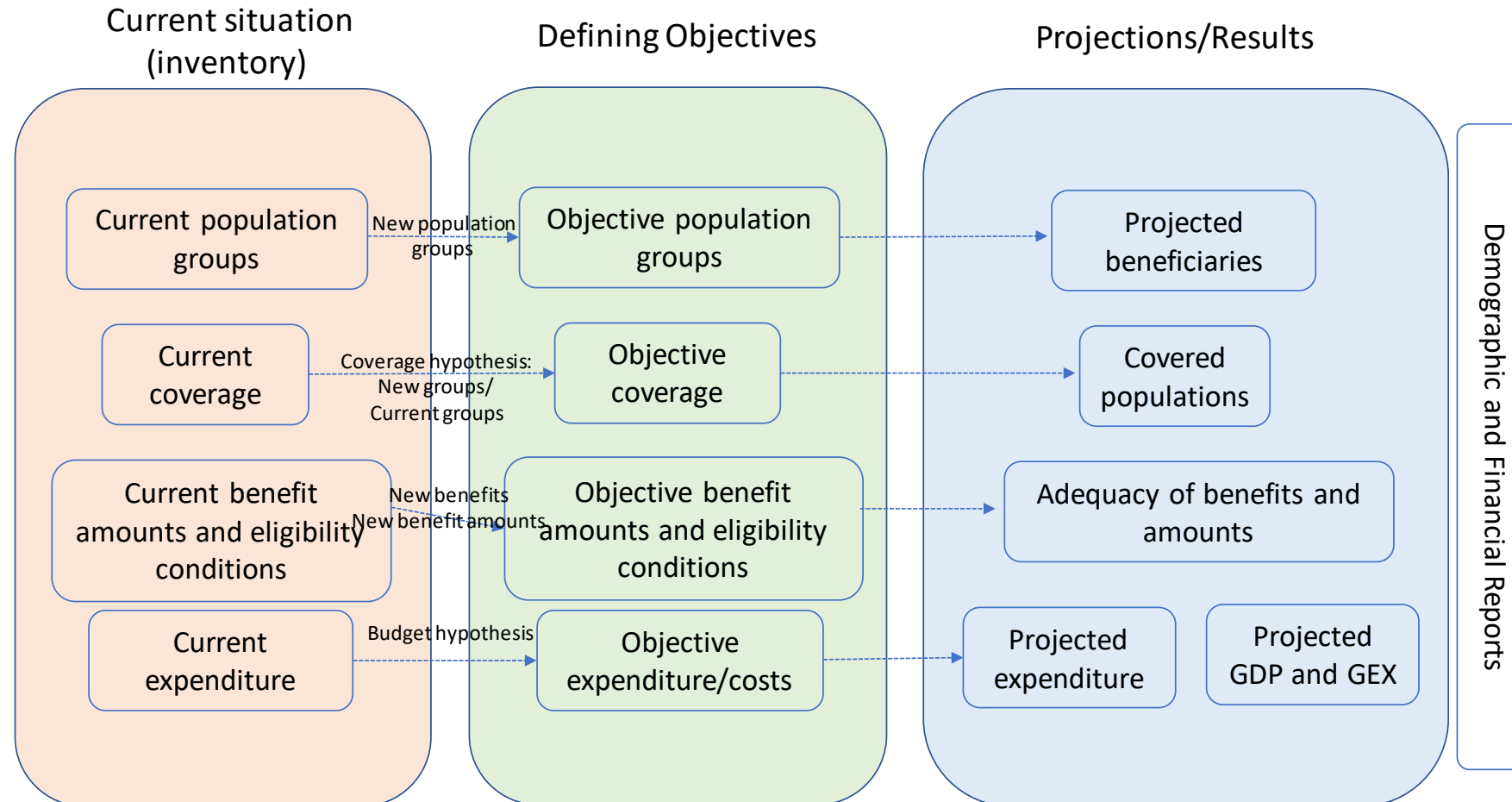
1. Assisting ABND exercise – rapid analysis of SP systems
2. Analysis of existing SP systems and its coverage and financing gaps
3. Ex-ante costing and assessing financing gaps of introducing a new SP benefit
4. Projection of financing needs for maintaining a set of SP benefits

...and many others

Benefits for Each Guarantee of Recommendation No. 202						
[Ex.1] Example 29.09.2021 (Model: Ex-1)						
Country:	Somewhere (Example)					
	Base Year	Projection Period				
	2020	2021	2022	2023	2024	2025
health_care						
Health protection for the informal workers						
Beneficiaries (Covered Population)	16,000.00	343,430.18	666,477.39	1,031,212.54	1,442,968.81	1,850,251
Coverage Rate of Target Population	0.76%	15.76%	30.76%	45.76%	60.76%	75.7
Total Annual Expenditure	233,044,000.00	5,044,797,038.93	9,888,081,488.51	15,452,408,216.55	21,838,676,038.45	28,282,748,279
in % of GDP	0.00%	0.03%	0.06%	0.09%	0.12%	0.1
in % of GEXP	0.01%	0.13%	0.24%	0.35%	0.47%	0.5
child_protection						
Prenatal and infant benefit						
Beneficiaries (Covered Population)	18,451.00	18,922.24	19,268.53	19,684.82	20,363.09	20,658
Coverage Rate of Target Population	1.10%	0.94%	0.94%	0.94%	0.94%	0.9
Total Annual Expenditure	13,657,220,400.00	21,563,997,285.90	34,126,319,687.65	53,899,904,044.13	85,214,761,740.06	134,821,696.82
in % of GDP	0.09%	0.14%	0.21%	0.32%	0.48%	0.7
in % of GEXP	0.38%	0.54%	0.82%	1.23%	1.85%	2.7
elderly						
Non contributory pension						
Beneficiaries (Covered Population)	206,000.00	212,000.00	218,000.00	224,000.00	230,000.00	236,000.00
Coverage Rate of Target Population	26.02%	26.02%	26.02%	26.02%	26.02%	26.02%
Total Annual Expenditure	46,696,000,000.00	48,601,395,000.00	50,506,790,000.00	52,412,185,000.00	54,317,580,000.00	56,222,975,000.00
in % of GDP	0.32%	0.32%	0.32%	0.32%	0.32%	0.32%
in % of GEXP	1.31%	1.31%	1.31%	1.31%	1.31%	1.31%
other						
Social Development Bond						
Beneficiaries (Covered Population)	1,933,340.10	1,992,340.10	2,051,340.10	2,110,340.10	2,169,340.10	2,228,340.10
Coverage Rate of Target Population	30.46%	30.46%	30.46%	30.46%	30.46%	30.46%
Total Annual Expenditure	36,448,100,000.00	38,103,543,000.00	39,758,986,000.00	41,414,429,000.00	43,074,872,000.00	44,735,315,000.00
in % of GDP	0.25%	0.25%	0.25%	0.25%	0.25%	0.25%

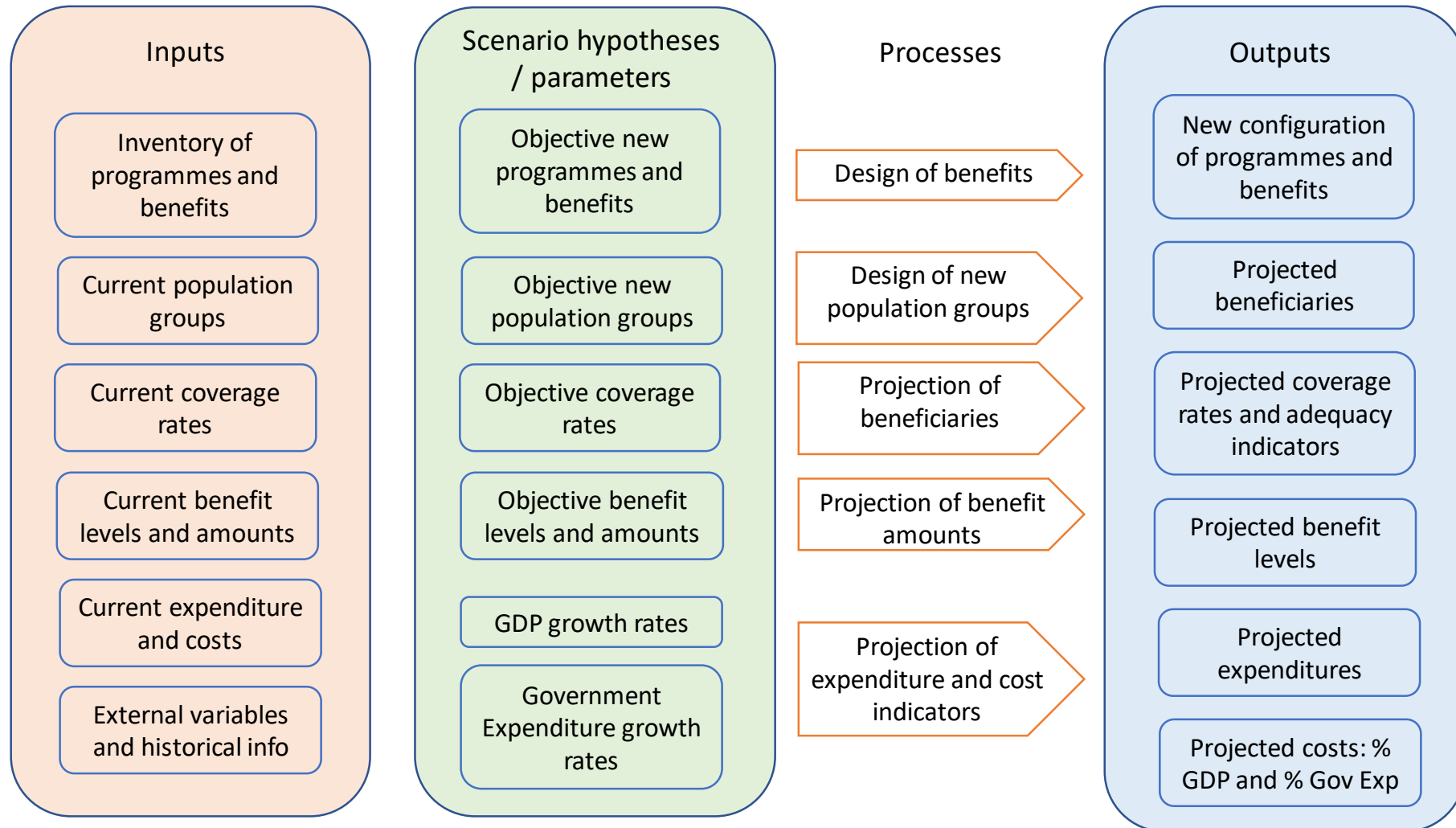








Stages in ILO/RAP





Definitions



Population Groups

Set of individuals or households with the same identifying characteristics

Individuals: Age, sex, risk characteristics
Households: Risk characteristics

Benefits

In-cash or in-kind transfers provided for social protection functions (risk, vulnerability)

*Characteristics of benefits:
Cash/kind, source of financing,
periodicity, objective population, SP
functions/guarantees to which it
pertains*



International
Labour
Organization

Walkthrough



ILO/QPSS

Quantitative Platform
on Social Security



International
Labour
Organization



ILO/RAP
Rapid Assessment Protocol
Social Protection Costing Tool

User log in

Language ▾

Welcome to ILO/RAP!

ILO/RAP, The ILO Rapid Assessment Protocol Social Protection Costing Tool, is a tool for costing social protection floors and assessing the financing and impact of investment in social protection.

To learn more about the ILO's Assessment Based National Dialogue that forms the basis of this model, consult our publications [here](#).

Email

Password

Log in

[Forgot password](#)

[Change password](#)