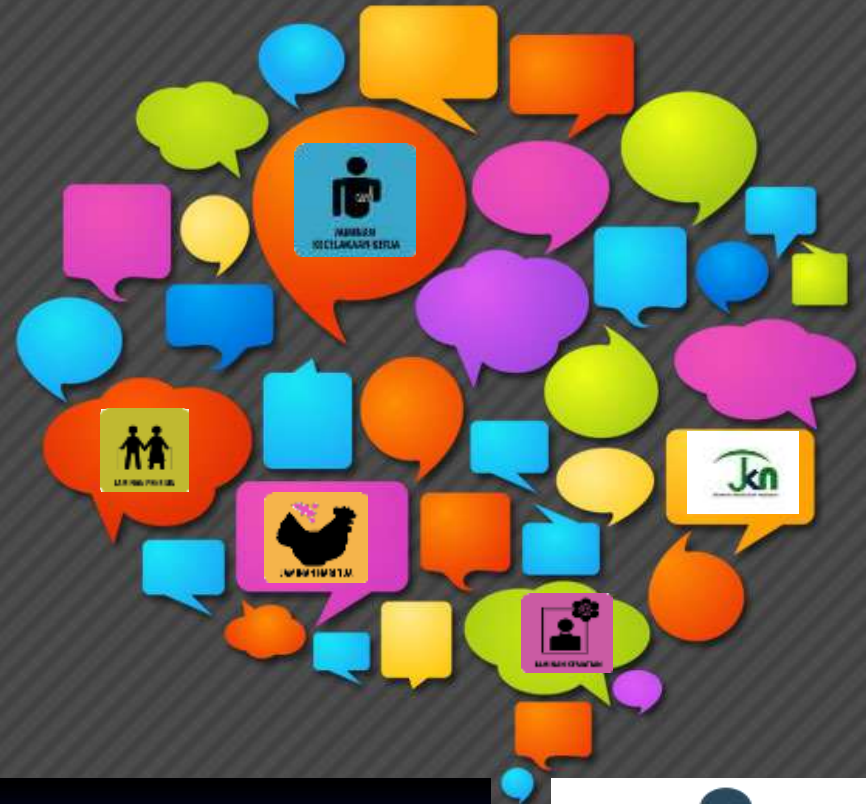




(SSTC-China, Sept 6-8, 2016)



PROGRESS IN EXTENDING SOCIAL SECURITY IN INDONESIA



KEMNAKER

MoM - INDONESIA

INDONESIA SOCIAL SECURITY



Social Security is the right of each citizen

Indonesia Constitution 1945



17 August 1945



17 August 2016



1 January 2014



Social Security Executing Body (SSER)

Act No. 24/2011



1 July 2015

EMPLOYMENT STRUCTURE



Working Age
Population
187,58



Labor Force
127,67



Non- Labor Force
59,91

Working
population
120,65

Unemployment
7,02



BASIC PHILOSOPHY



CREATING GOOD WORKING CLIMATE/ATMOSPHERE

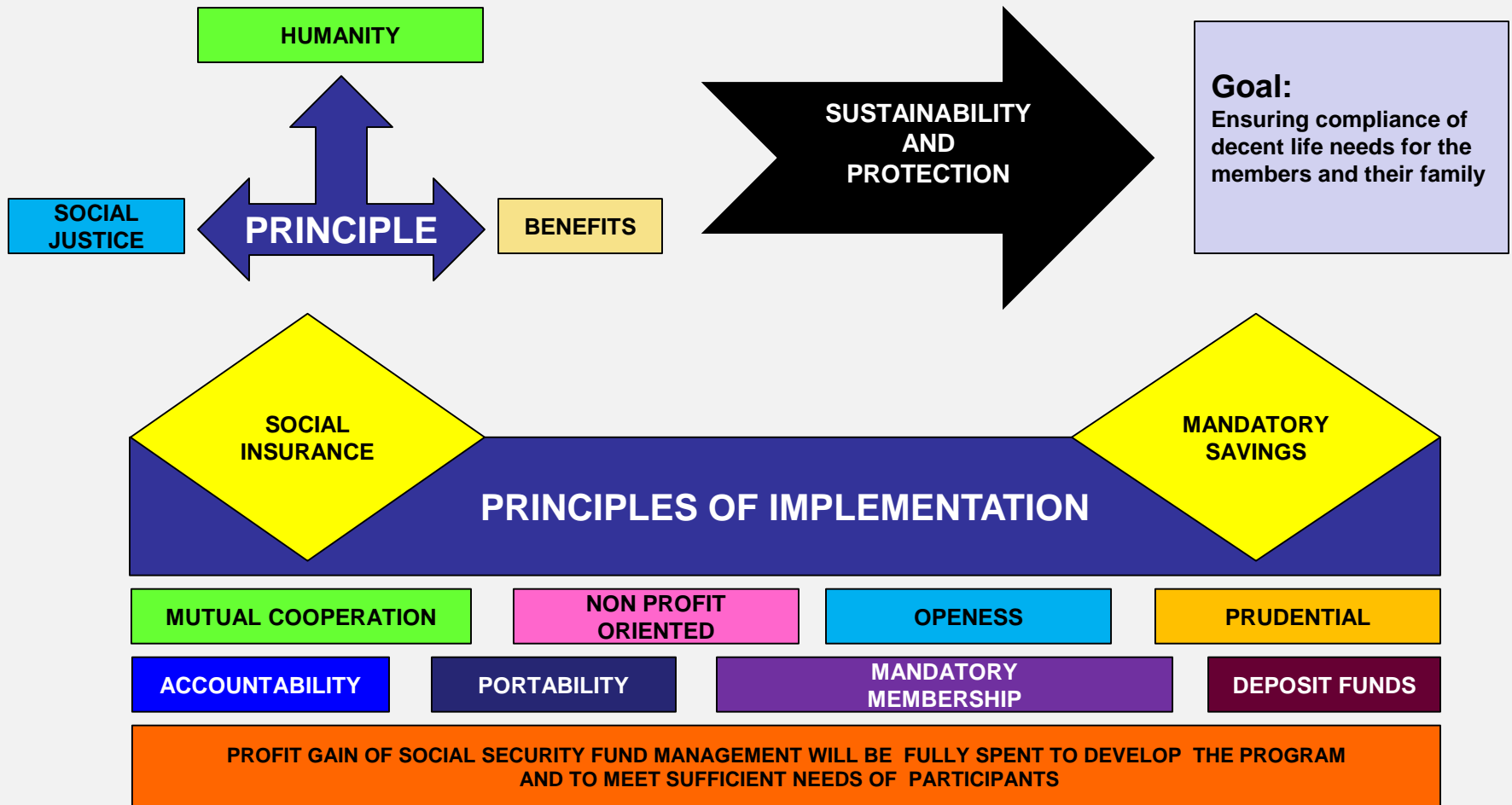
**ENSURING SOCIAL WELFARE FOR
WORKERS AND THEIR FAMILY**

**CREATING POSITIVE CLIMATE / ATMOSPHERE
FOR BUSINESS**

**IMPROVEMENT OF
WORKING DISCIPLINE AND
LABOUR PRODUCTIVITY**



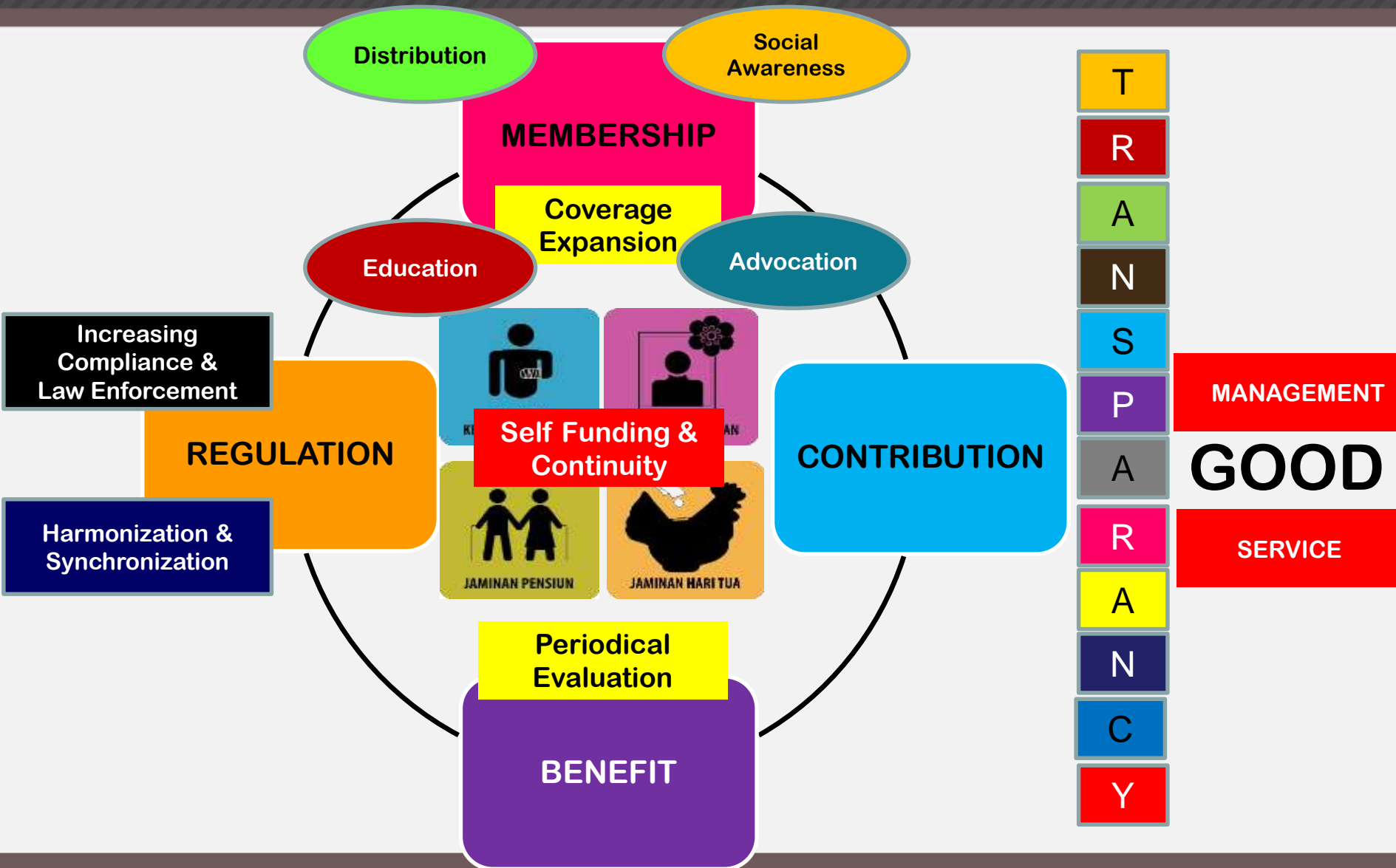
NATIONAL SOCIAL SECURITY SYSTEM



COMPOSITION OF CONTRIBUTION

Program	Contribution Composition		Total	Contribution Limit
	Employers	Workers		
EMPLOYMENT SOCIAL SECURITY				
a. Occupational Accident Security Scheme (OASS)	0,24% - 1,74%	-	0,24% - 1,74%	Basic Wage + Permanent Allowance
b. Health Security Scheme (HSS)	0,3%	-	0,3%	Basic Wage + Permanent Allowance
c. Old Age Security Scheme (OldAgeSS)	3,7%	2%	5,7%	Basic Wage + Permanent Allowance
d. Pension Security Scheme (PSS)	2%	1%	3%	Rp 7 millions
HEALTH SECURITY SCHEME				
e. National Health Security Scheme (NHSS)	4%	1%	5%	
Total	10,24%-11,74%	4%	14,24%-15,74%	

STRATEGIC TARGET



POSITIVE IMPACT



Encouraging the growth of the labor market

1

2

Reducing un employment

Provide protection & welfare for workers

3

4

Reducing Poverty

As stabilizer development of the country

5



CHALLENGES



- Working agreement for contract workers
- Working agreement for permanent workers

UNEMPLOYMENT

- Termination
- Resign

- Severance pay
- Social security

COMPENSATION

WORKING RELATIONSHIP





CONTRACT WORKERS

Gives impact on ineffectiveness & unoptimal of social security membership



TERMINATION

Is in deed "a final decision" made by company



SEVERANCE PAY

To provide assistance to workers during their period of unemployment & waiting for new job because Indonesia don't prepare yet Unemployment Insurance



INNITIATIVES

1 Development of information technology infra-structure & data integration

2 Extension of membership/participant from collective base to retail base for small and micro business scale

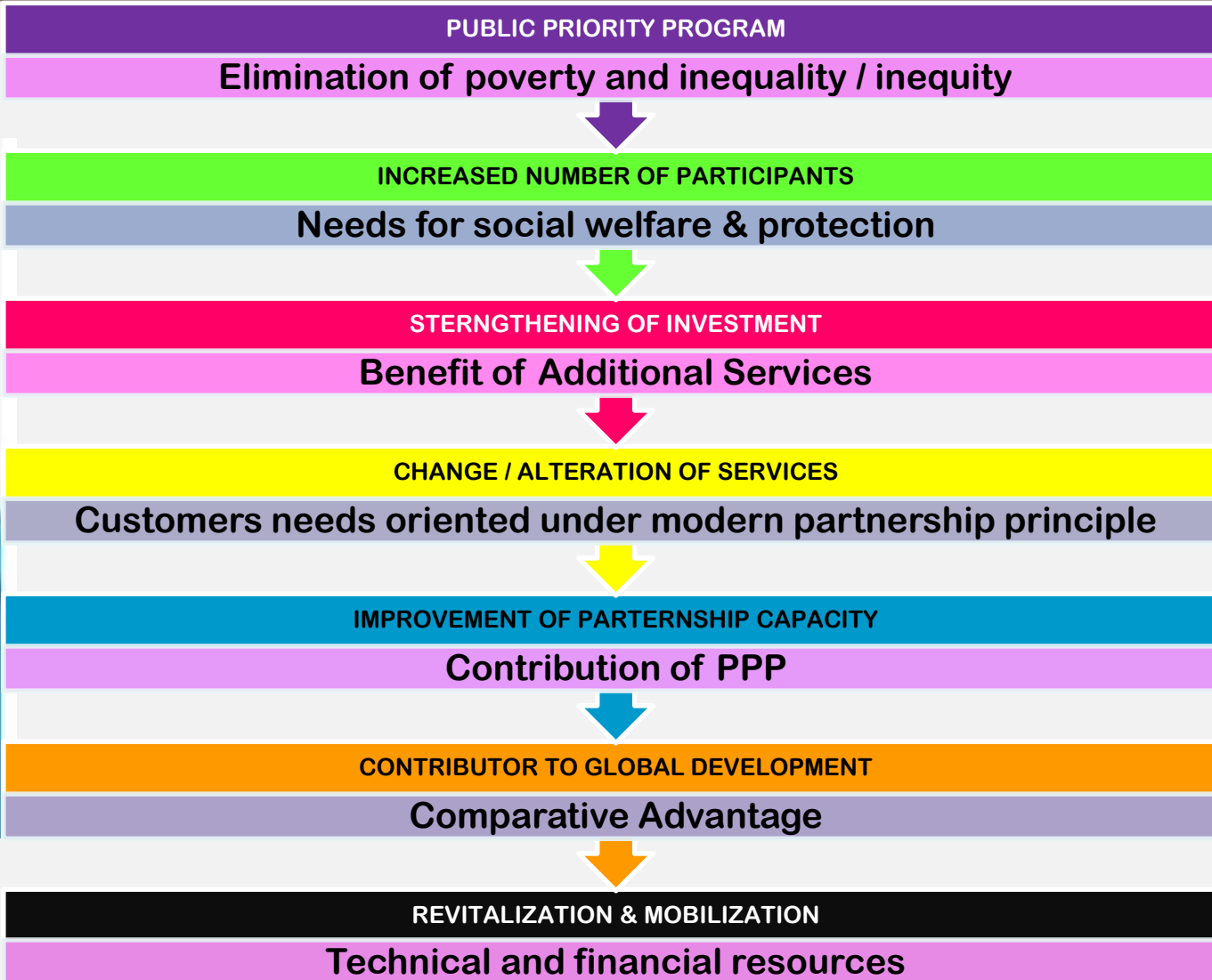
3 Strengthening institutional cooperation

4 Extension of coverage and & number of distribution cannal

5 Optimalization of both internal & external oommunication function



PROGRESS & CONTRIBUTION





ThAnK You



Amelia Diatri T.D